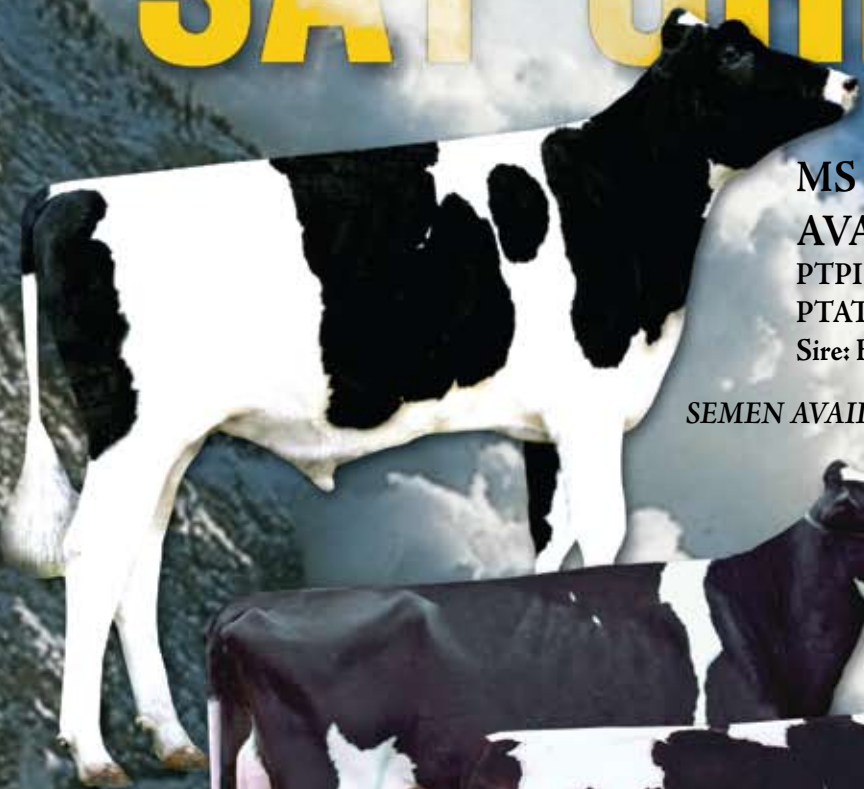


SAY CHEESE!



MS ATLEES GW
AVALANCHE-ET 36HO400
PTPI +1860 PTA +616M +56F +35P
PTAT +3.49 +2.86UDC +2.32FLC
Sire: Braedale Goldwyn

SEMEN AVAILABLE!

MD-DELIGHT DURHAM ATLEE-ET
(EX-92 DOM)
3-11 2X 365 38,280 5.5 2091 3.1 1177
Unanimous All-American Sr. 3-Yr-Old 2005
Dam of Avalanche & MS Atlees Roy Autumn-ET

Billy Heath



Billy Heath

Billy Heath

MD-DELIGHT STRM
AMBERLEE-ET
(VG-88 VG-MS DOM)
2-02 2X 365 26,170 3.7 969 3.0 786
Her dam & 2nd dam of Avalanche
MS Kingstead Chief Adeen-ET (2E-94 DOM)
3-05 310 30,180 4.0 1209 3.4 1020
2nd Dam: C Aitkenbrae Starbuck Ada
(2E-94 DOM)
Res. All-Time All-American Sr. 3-Yr-Old

Cybil Fisher

MS ATLEES ROY AUTUMN-ET
2007 People's Choice Heifer
1st Fall Calf & Junior Champion International
Holstein Show 2007
All-American Fall Calf 2007
Maternal sister to Avalanche

*A picture perfect pedigree,
with high type and
high components!*

*Field of Dreams
Genetics LLC*

Gary & Janet Tubolino & Family
41 Grove St., Adams, NY 13605-1203
315-232-2841 • Fax 315-232-4153
www.fieldofdreamsgenetics.com

